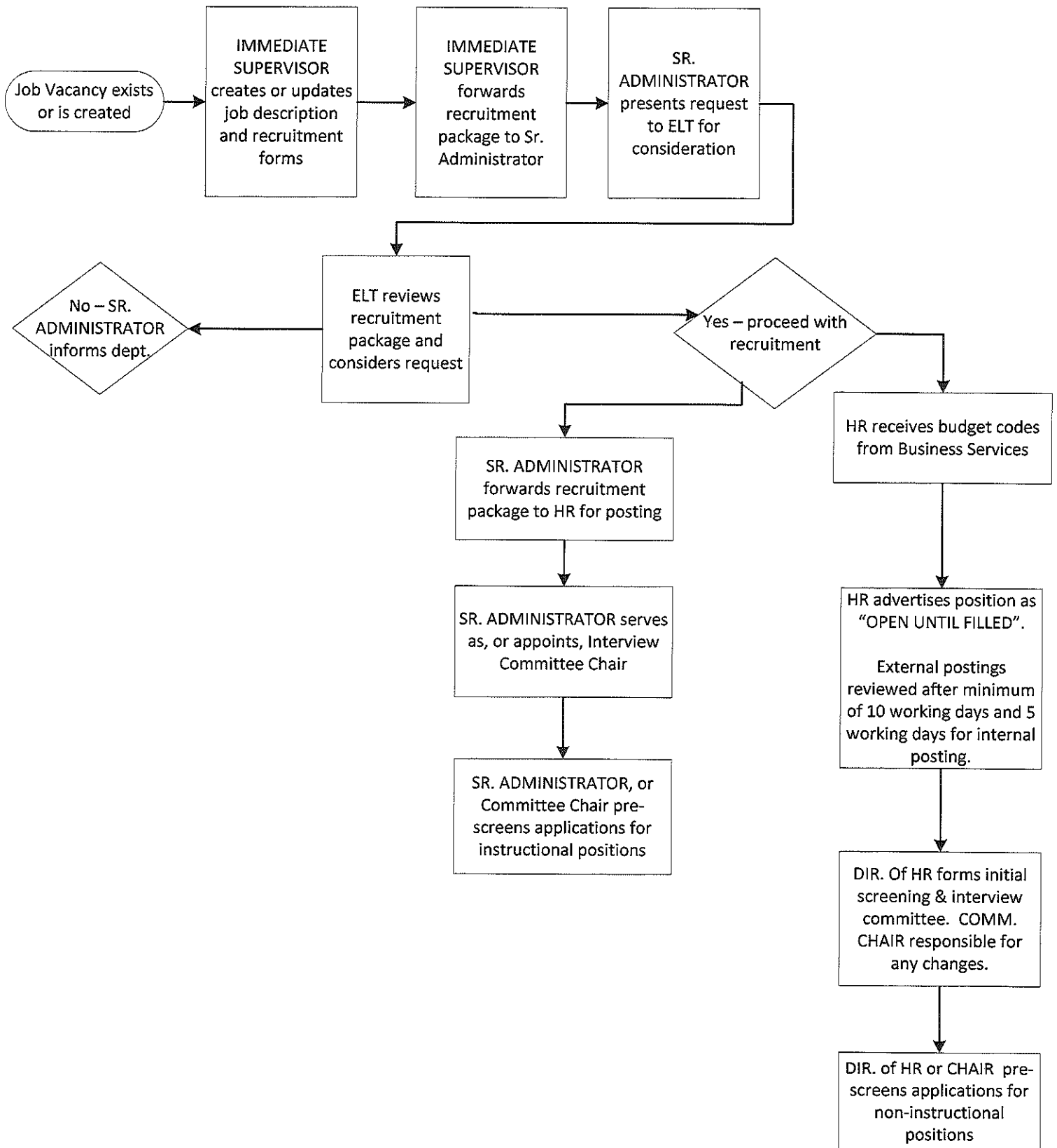


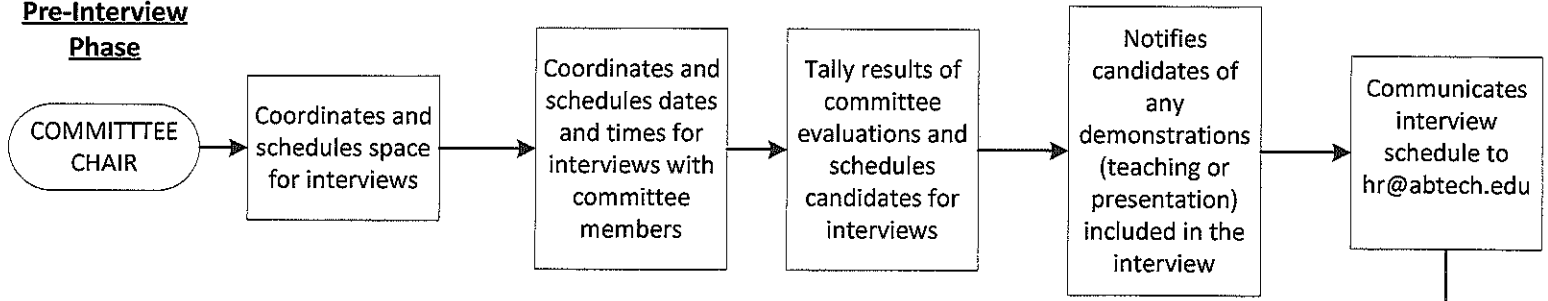
**FULL-TIME REGULAR and FULL-TIME OTHER (30 hour per week) - POSITION RECRUITMENT**

**Review and Approval Phase**

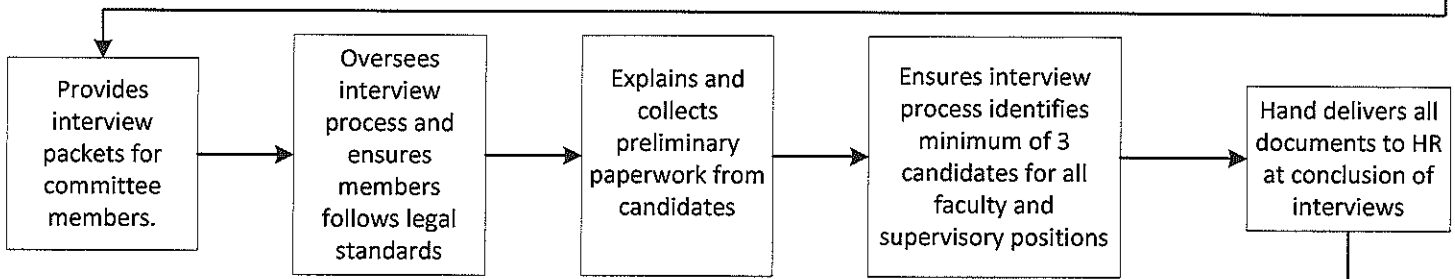


**FULL-TIME REGULAR and FULL-TIME OTHER (30 hour per week) - INTERVIEW PROCESS**

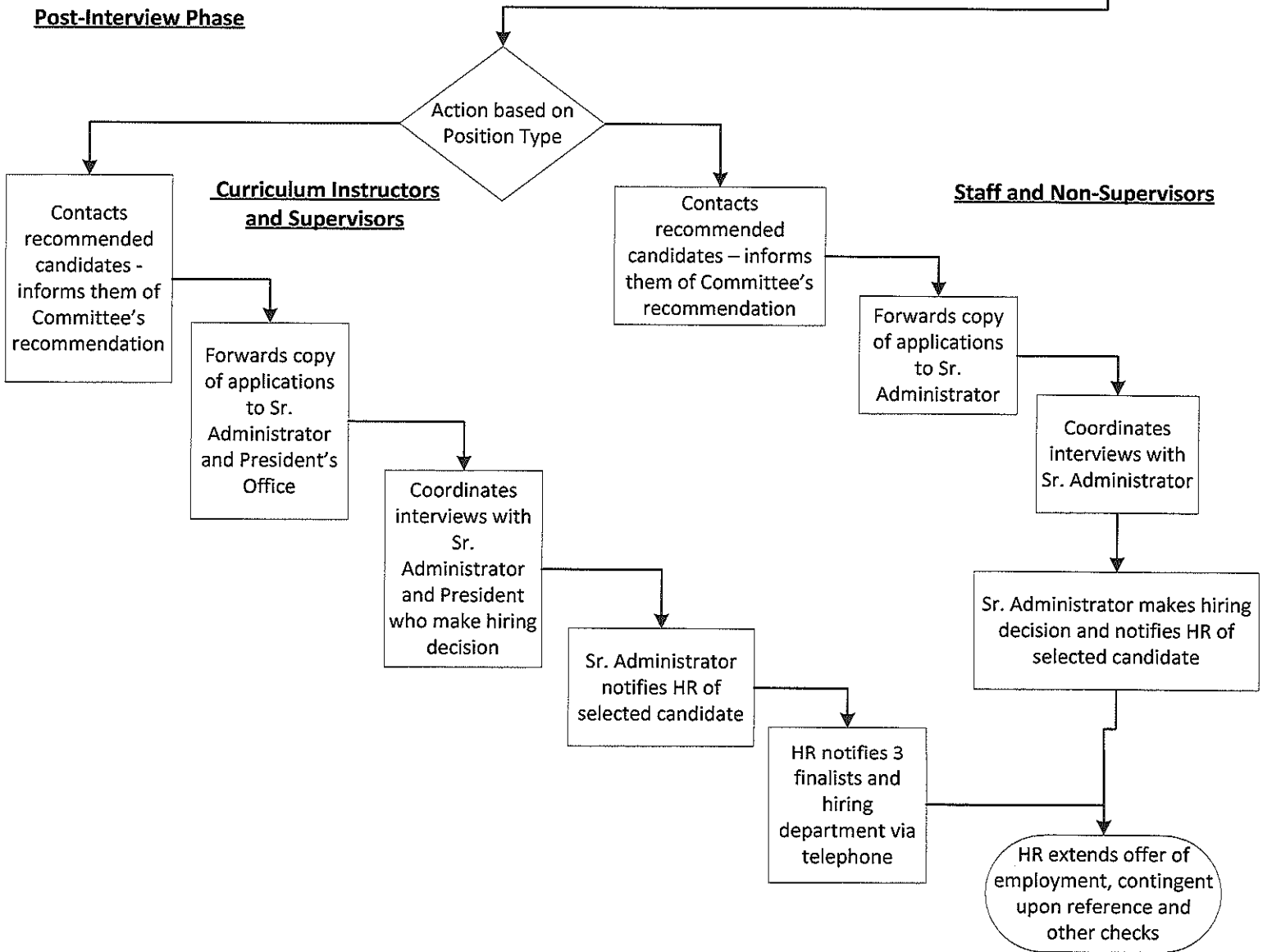
**Pre-Interview Phase**



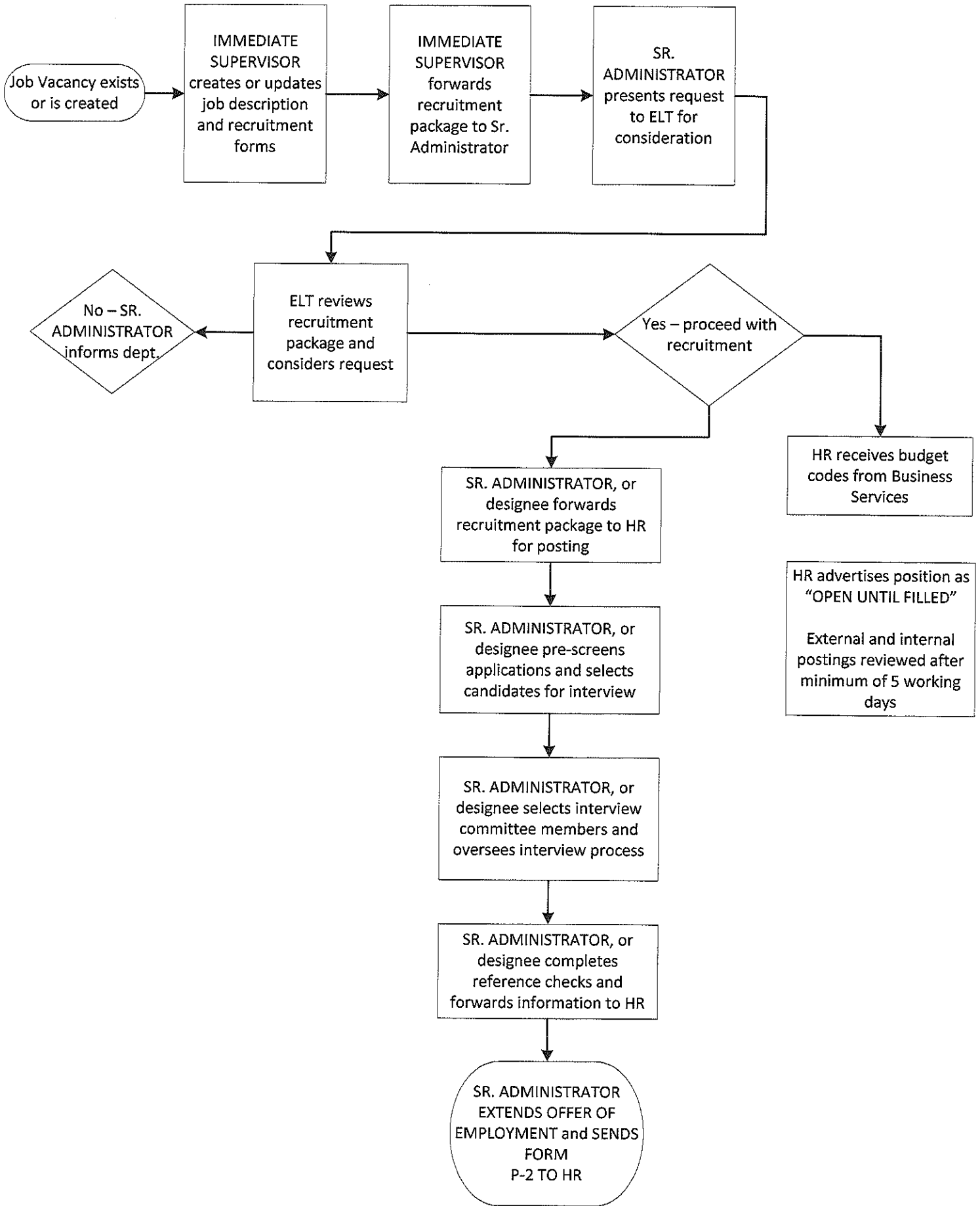
**Interview Phase**



**Post-Interview Phase**



**PART-TIME REGULAR and TIME LIMITED (non- adjunct faculty)  
RECRUITMENT, INTERVIEW & SELECTION PROCESS**



# ADJUNCT FACULTY & CON ED INSTRUCTORS – RECRUITMENT, INTERVIEW & SELECTION PROCESS

